

# HD5工业视频内窥镜 Handheld Portable Videoscope

## **Hendoss**

**Dedicate to Vision Inspection/RVI**



## Intelligent Design

Hd5 Handheld Portable videoscope, we are very proud of its ergonomic grip design, excellent functions for real daily-use and born great advantage of after-sales.



## Compatibility

- Mouldar Design, the host/probes are detachable w/ different diameters.
- New-designed articulation mechanism, Joystick control, 360° direction.
- Compatible with Ø2mm/Ø2.4mm/Ø2.8mm/Ø3.9mm/Ø4.0mm/Ø5.8mm/Ø6.0mm self-compatible with different probes.
- Pixels of Lenses: 160,000/30,000/1 million/2 million, Self-compatible.
- Types of Lens: Front/side view or 2 in one, twins lenses w/ short/far focus
- Accessories: Probe inner clamp.



# Innovation

As the aging of steel string, it is extended definitely and the articulation of the tip is not bending widely. Anyone can fix it with screwdriver shortly. No need to return factory to repair.



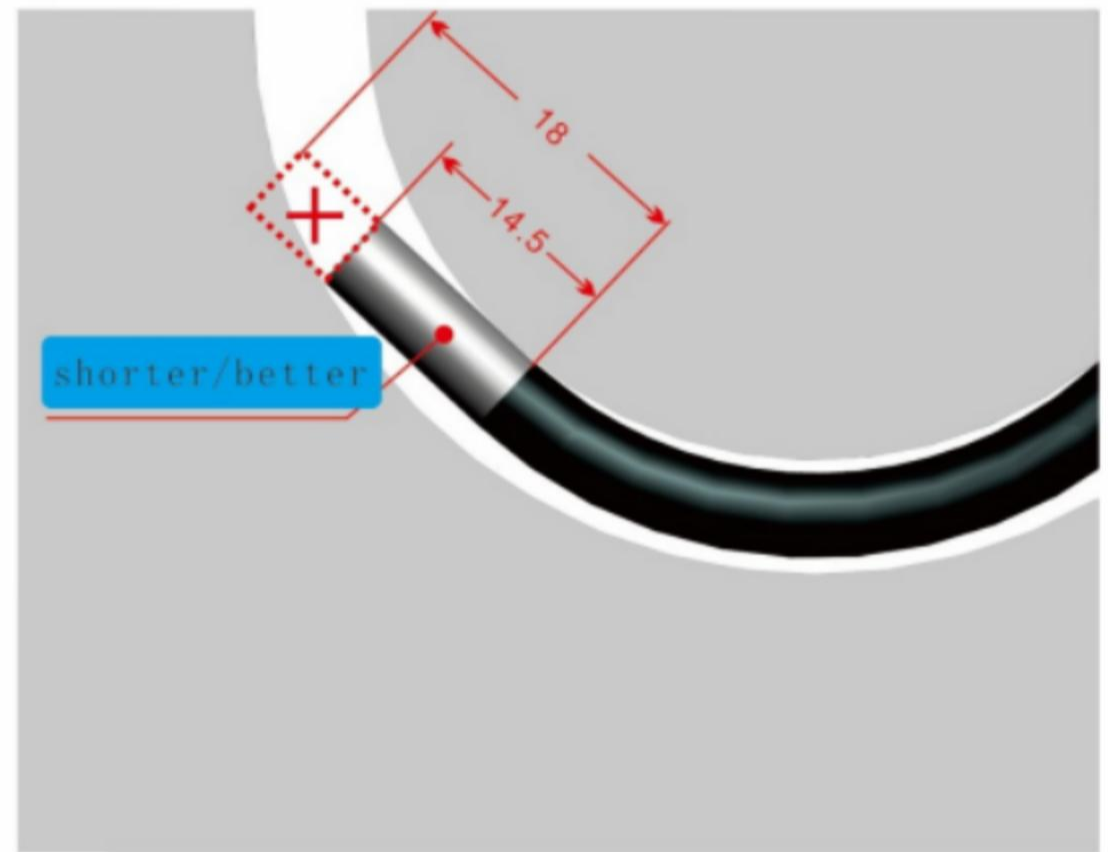
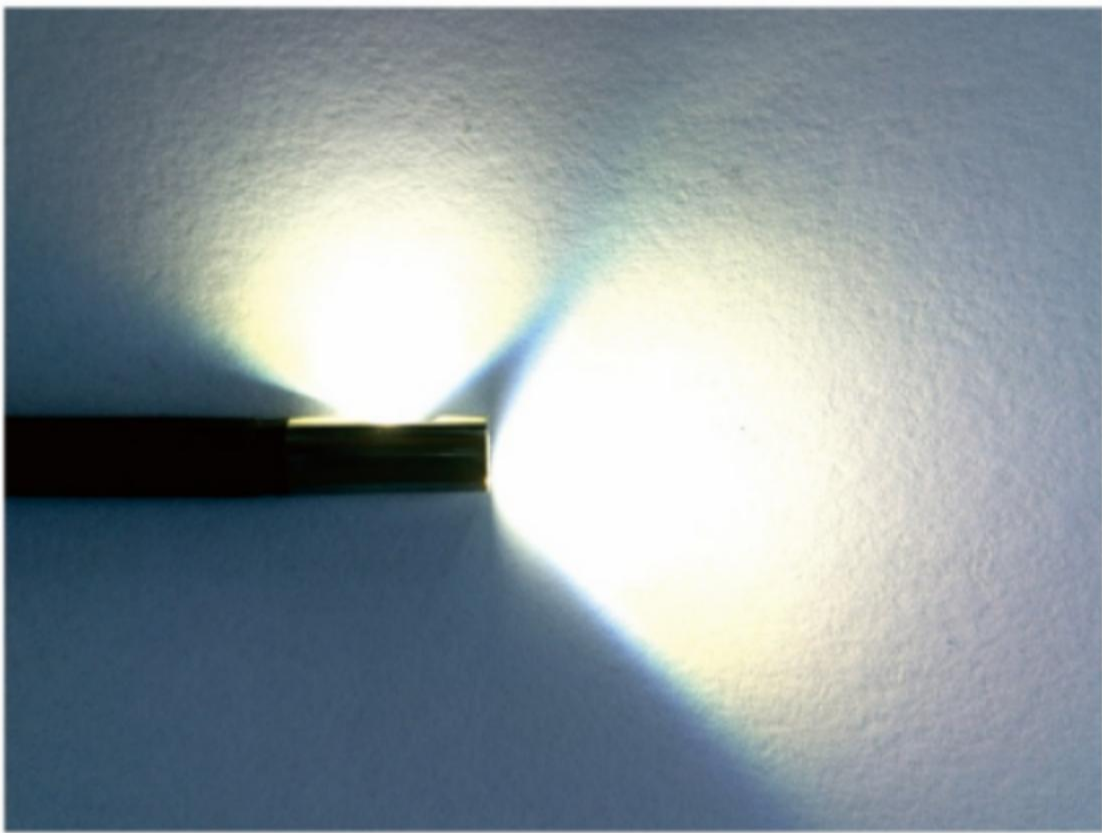




5.8mm dual lenses



4.0mm dual lenses



- Back-mounted, optical fiber light 100,000 LUX.
- Tip, the shorter the better to get through narrow space.
- Integrated design for better AOV, DOF, waterproof and dustproof. No worry for lens lost or falling off.

For Clamps



Ø6.0mm inner Clamps tunnel, easy to pass & no stuck.  
Optional: crocodile squeezer, Quad-paw clamp.

Ø6mm twins lenses (short/far Focus) for narrow or wide space, just it! No waste time to change lens.



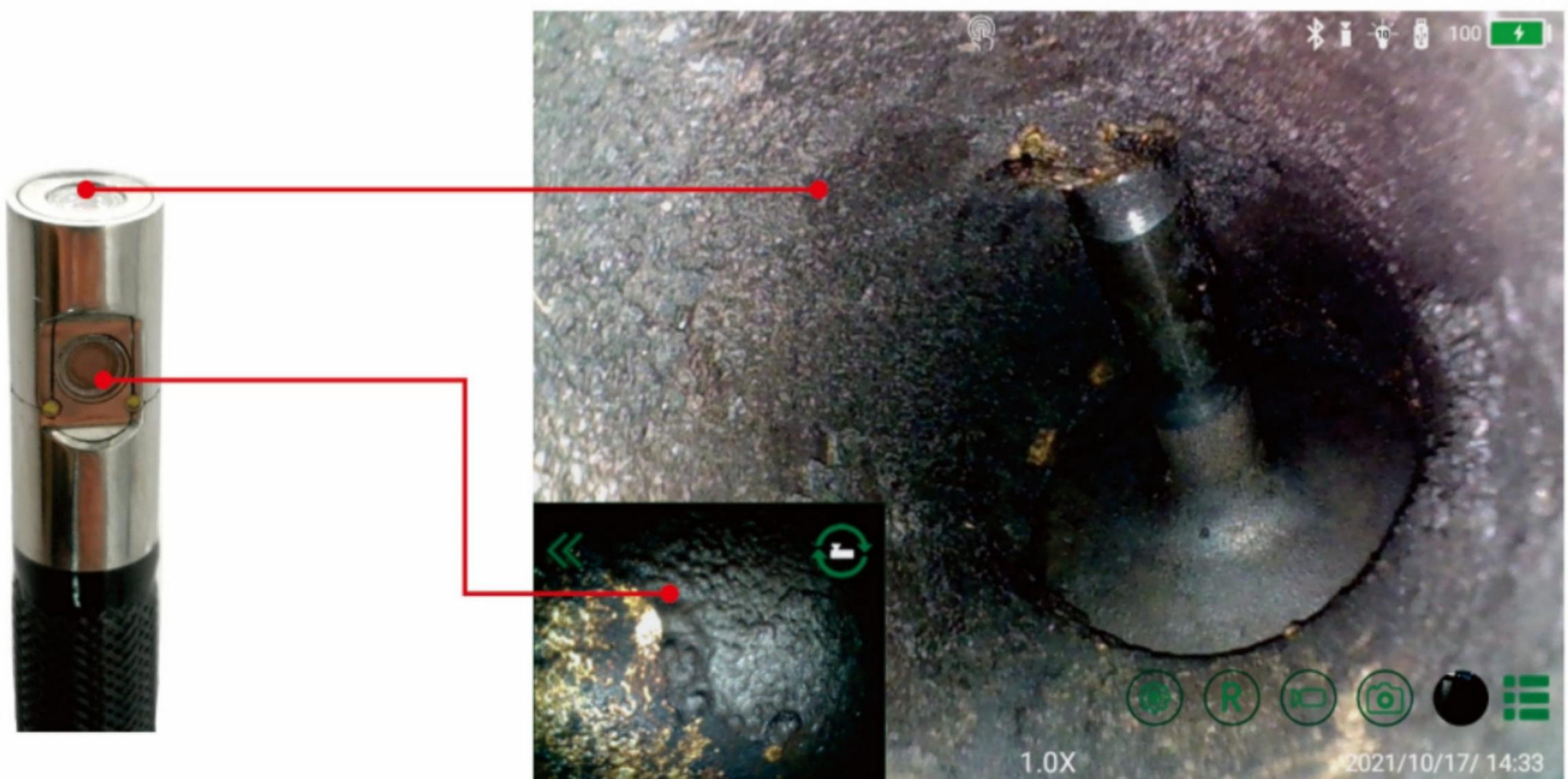


- Φ 6.0mm inner clamp via tunnel
- Φ 6.0mm twin lenses front view
- Φ 5.8mm front/side view
- Φ 5.8mm front view
- Φ 4.0mm front/side view
- Φ 3.9mm front view
- Φ 2.8mm front view
- Φ 2.0mm front view

## Software

### Picture in picture

- Dual lenses can display simultaneously, just figure tap the icon for switch or hidden.
- Front and Side view both are mega pixels display on the monitor simultaneously, the real time picture for flow inspection.
- Front Twin Lenses with short/long focus for narrow/wide space inspection. Quickly to get the flaw & no waste time to change the lenses.
- One host working for different insertion tubes with different pixels.



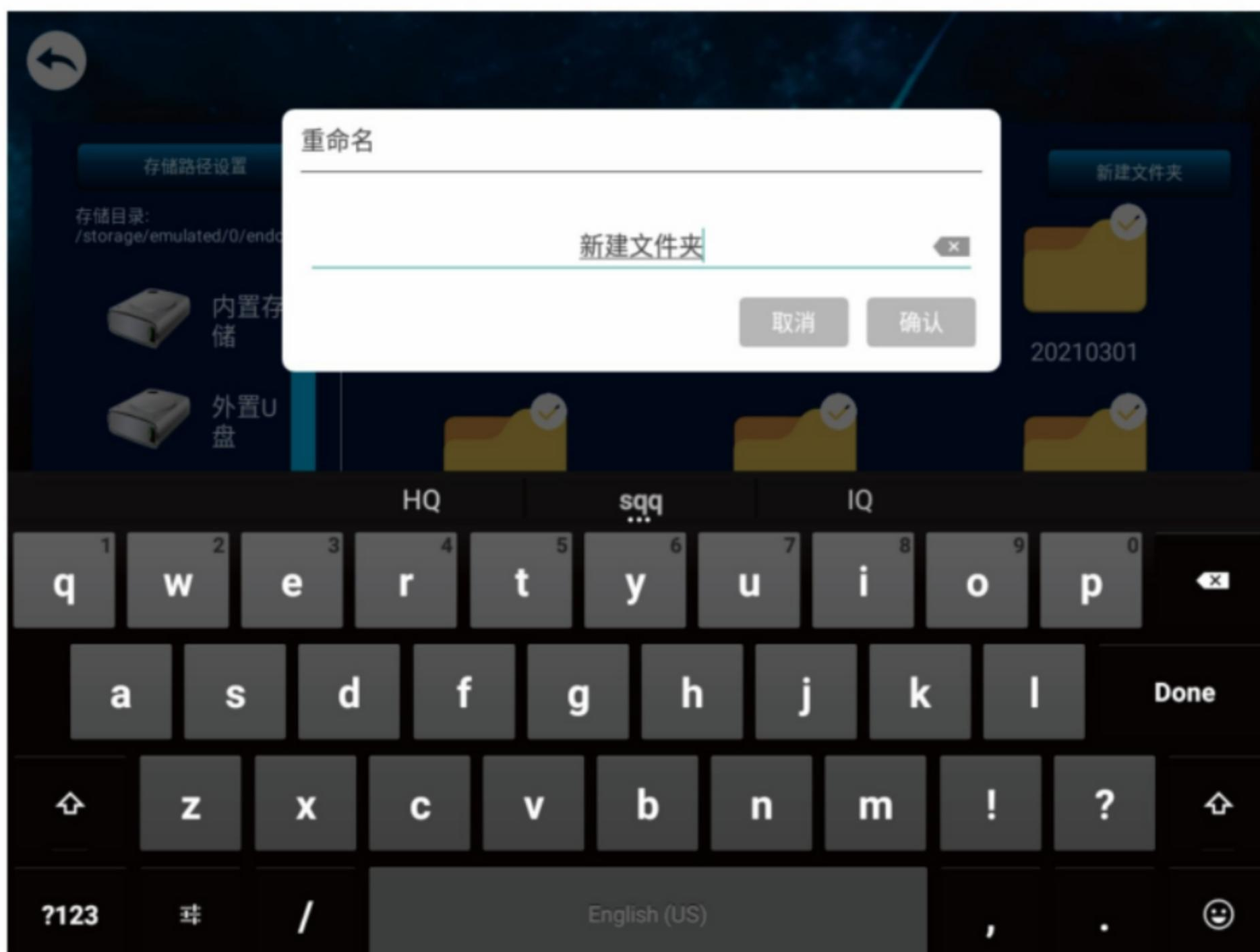


## Files Manage

Reset file storage path,new folders create,Rename, Copy,Delete.



Touch control Keyboard with multi-modes optional.

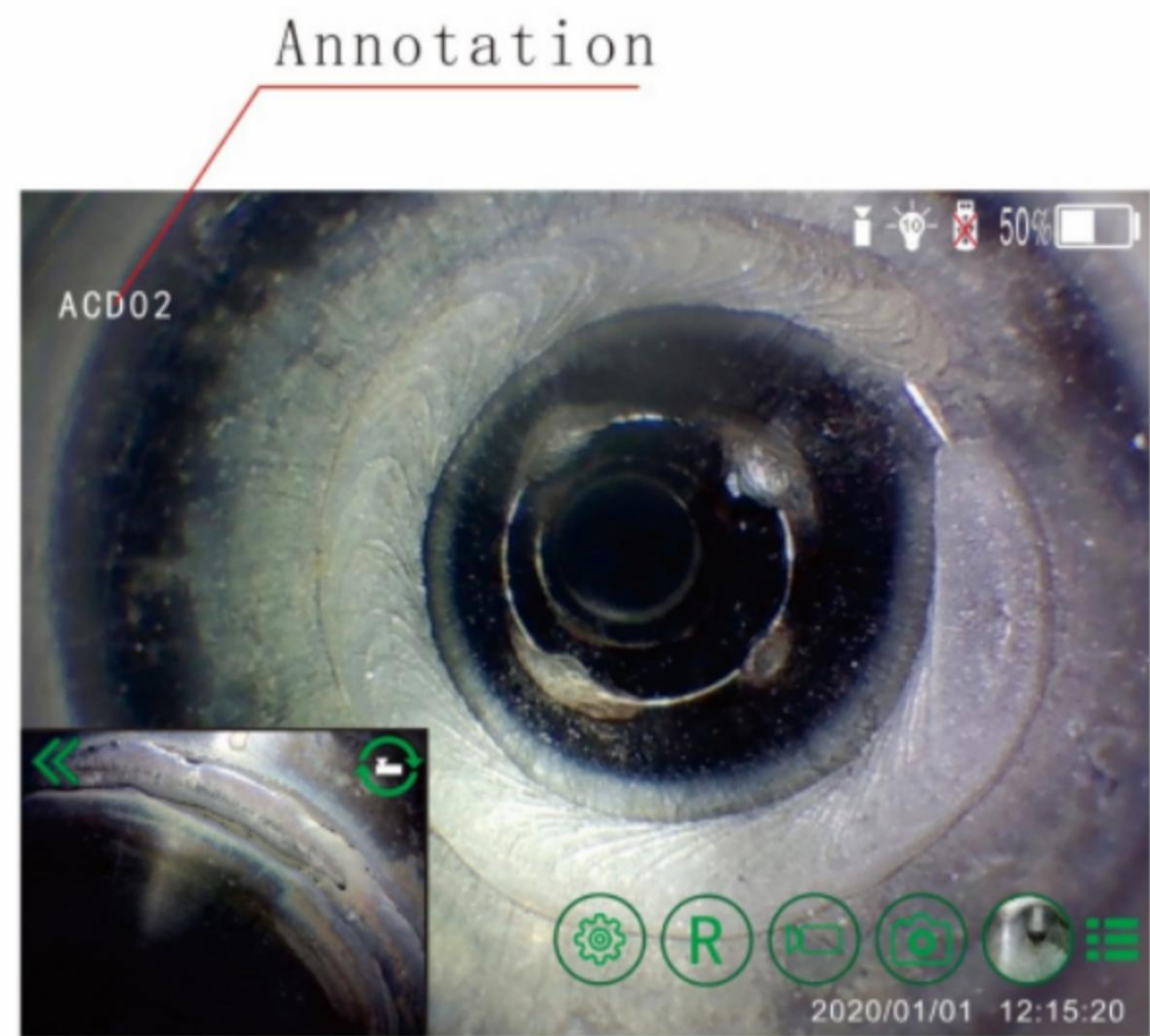




## Annotation

Unlimited preset annotation as watermark in the picture. So it helps you find the inspection flaw at the spot.

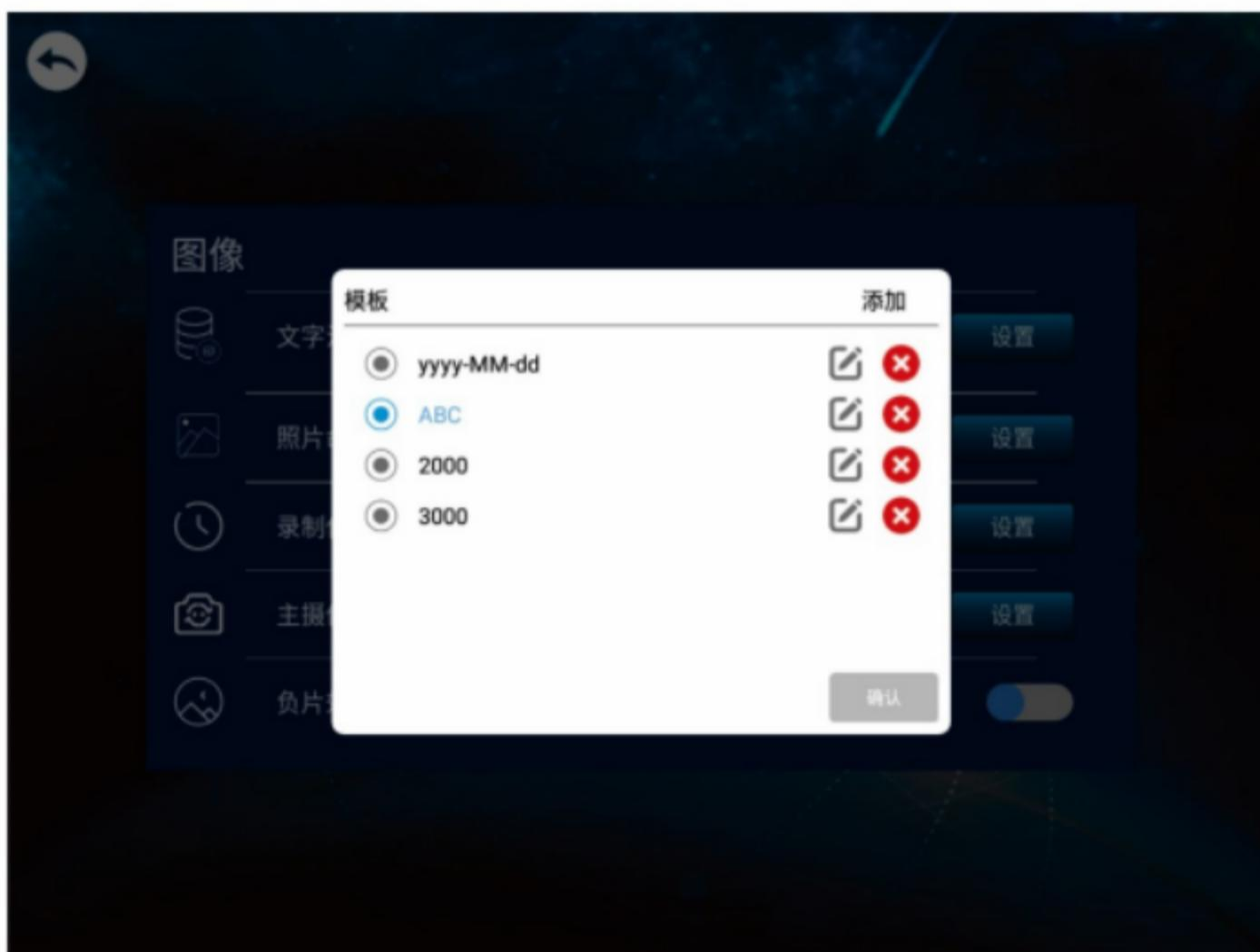
Double-Tap to change the location of the watermark in the picture.



## Customized Pic Name

- Default Name: Y+M+D+SN (example: 202312310001)
- Customized: Preset Content+SN (example: weld-flaw001)
- Customized picture name as annotation, you can find the any pic from the bulk messy pictures.

截图(Alt + A)



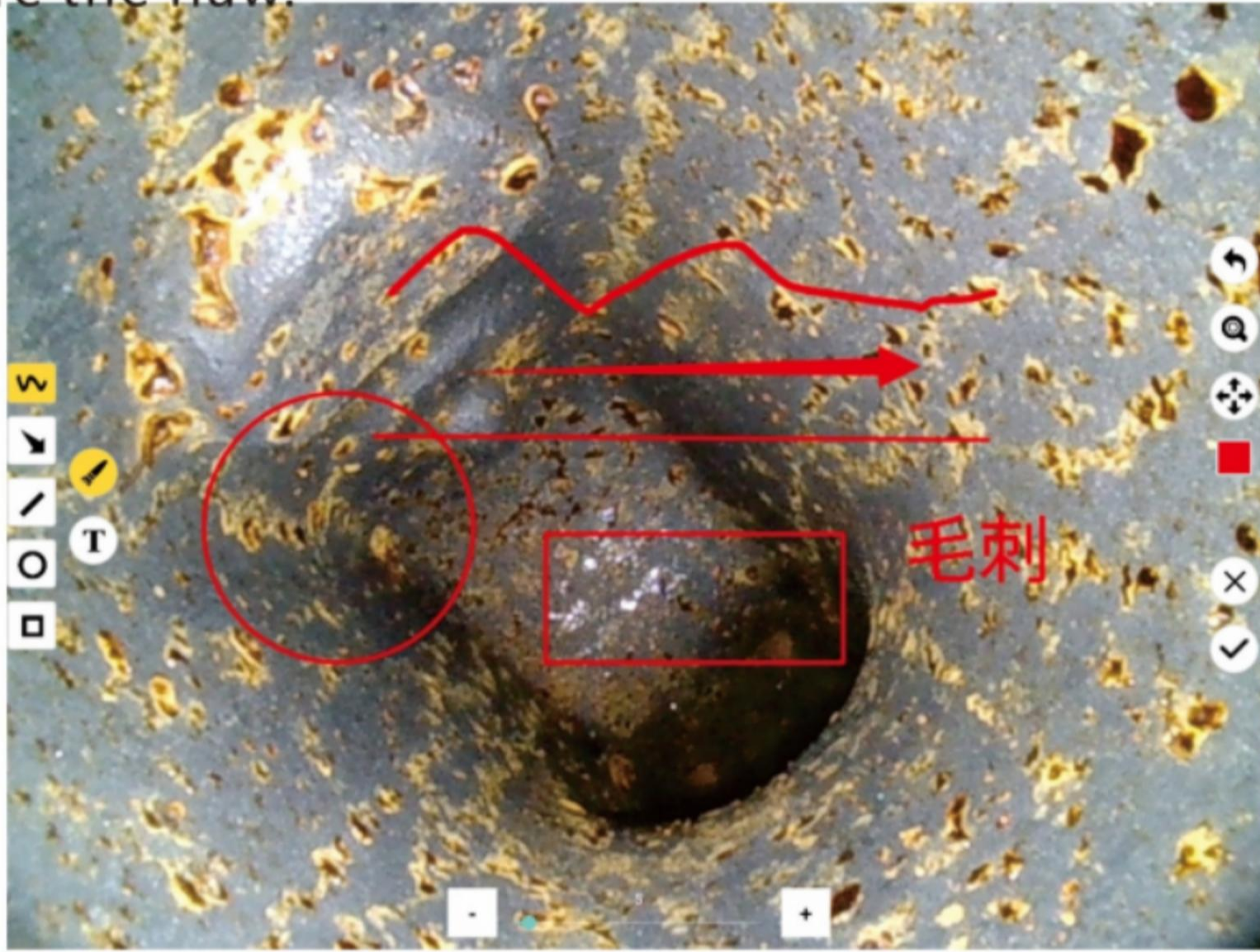
202001010001



A0001



Edit the pic:doodle,remark,waterremark to describe what/where the flaw.



Demo exsamples





## Spec.

Lens	2.0mm/2.4mm/2.8mm/3.9mm/6mm/8mm(Customized)
Length	1m/2m/3m/4m/5m/8m/10m (Customized)
Piexls	160,000 / 300,000 / 1 million / 2million
FOA	70° / 90° / 120° / 140°
DOF	4~100mm / 5~150mm / 10~200 / 15~∞
Display	IPS HD5.2" CPT,resolution:1024*768
Joystick	Mechinical control,360°All directions.
Light	Back-Mounted LED, Optical-fiber lighting 12000Lux, LED life span 30000 hours.
OS	Android System
Operate	Touchscreen &physical buttons
Languages	en/cn (any others available if need)
Software	Pic in pic,self-adaptation for lens:photos,Videos, Preview, pic frozen,zoom in/out,rotate, rename, annotate,edit、 doodle remark.
Picture	JPG
Video	Mp4
Storage	64GB bult-in SSD,32GB USB flsah
Interface	Type-C(for data)/USB2.0(flash, Mouse/keyboard) HDMI(for monitor)/3.5mm jack,Power DC(8.4V-12V/2A)
Work Temp	-30°C-80°C
Work Time	≥4hr Battery:8.4V/6800mAh LG/Panasonic
Weight	≤1.2KG