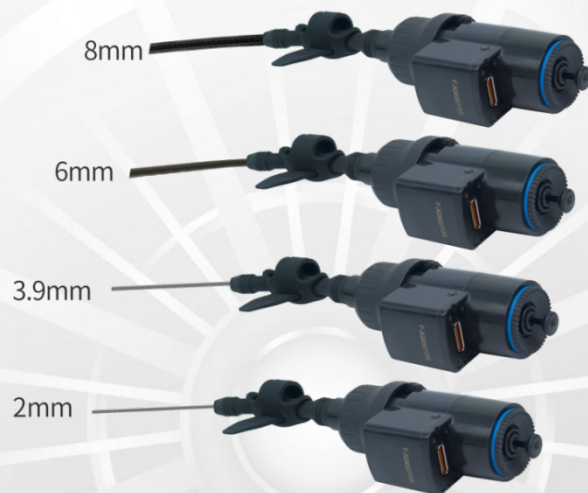




# GX

## Industrial Videoscope



Wind Power



Petrochemical



Nuclear Power



Aerospace



Automobile Manufacturing



Machining

# Software interactive main interface

## 8 touch icons

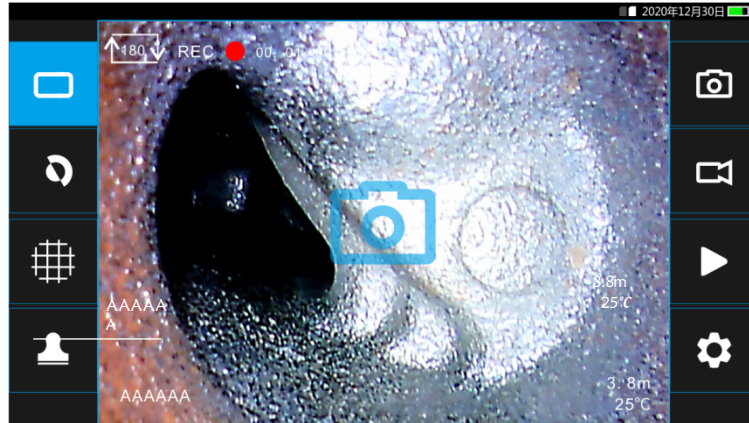
**Display mode**  
shadow display /strong light suppression / image increase / 3D noise reduction

**Negative icon**

**Ruler icon**

Press this icon to get crossed ruler and round ruler and can turn off the ruler

**Watermark icon**



**Photo icon**  
the icon will show up when a photo is taken successfully.

**Recording icon**  
When recording, the recording indicator flashes and the recording time will be displayed Click this icon to enter negative interf

**Playback icon**  
Click it to enter the picture and video playback interface

**Set up icon**  
Click it to enter the menu interface

## Main features

Touch screen design, more humane touch interactive menu

High-definition screen display monitor. The controller is compatible with manual probe and electric probe and supports 64G memory card. A 3D icon to get to noise reduction, strong light glare suppression software function, quick text annotation function, can meet at least 150 characters of input; richer specifications configuration: new 1.8mm direct view, 2.0mm side view and other very fine diameters, such as 6mm with 7.5m and 10m insertion cable length, and 8mm manual lens camera is available.



## Technical Specifications

### Probe

Small diameter series (front view)			
Camera diameter	2.0mm/1.8mm	2.4 mm	2.8mm
Camera length	8mm	8mm	8mm
Probe length	1m/1.5m	1m/1.5m	1m/1.5m
Image Sensor	CMOS1/18	CMOS 1/18	CMOS 1/18
Pixel	160,000	500,000	500,000
Depth of Field	5mm~50mm	5mm-50mm	5mm~50mm
Field of view	>120°	>120°	>120°
Camera housing material	Stainless steel	Stainless steel	Stainless steel
Brightness	>3000lux	>3500lux	>5000lux
Articulating way	2-way/non articulation	2-way	4-way

Standard series (front view)				
Camera diameter	3.9mm	6.0 mm	6.0 mm	8.4 mm (with adjustable focus )
Camera length	15mm	15mm	13mm	25mm
Probe length	2m/3m	2m/3.5m	2m/3.5m	2m/3.5m
Image sensor	CMOS 1/9	CMOS 1/4	CMOS 1/6	CMOS 1/4
Pixels	720P	720P	1080P	720P
DOF	8mm-80mm	15mm-infinity	10mm-100mm	6mm-infinity
FOV	>120°	>120°	>120°	>90°
Camera housing material	Stainless steel	Stainless steel	Stainless steel	Stainless steel
Light source	LED	LED	LED	LED
Brightness	> 30000lux	> 50000lux	> 50000lux	> 60000lux
Articulation	4-way	4-way	4-way	4-way

Side view series						
Camera diameter	2.0mm	2.8mm	3.9 mm	3.9 mm ( front + side view )	6.4mm	6.4mm ( front + side view )
Camera length	10mm	10mm	20mm	25mm	16mm	20mm
Probe length	1m/1.5m	1m/1.5m	2m/3.5m	2/3/4/5/6m	2m/3.5m	2m/3.5m
Image sensor	CMOS 1/18	CMOS 1/18	CMOS 1/9	CMOS 1/9	CMOS 1/9	CMOS 1/9
Pixel	160,000	160,000	720P	720P	720P	720P
DOF	3~50mm	5~50mm	5-25mm	F: 8-80mm S: 5-25mm	8-80mm	F: 8-80mm S: 5-25mm
FOV	>120°	>120°	>90°	>90°	>90°	>90°
Camera housing material	Stainless steel	Stainless steel	Stainless steel	Stainless steel	Stainless steel	Stainless steel
Brightness	>3000lux	>5000lux	20000lux	20000lux	40000lux	40000lux/ 20000lux

Articulating way	2-way	4-way	4-way	4-way	4-way	4-way
------------------	-------	-------	-------	-------	-------	-------

### Controller

Box size Size	548*458*198mm	Video output	NTSC/PAL output
Weight	1.2kg	Video input	Automatic identification of NTSC/PAL 5 terminal (analog signal)
Controller size	330mm*90mm*150mm	Memory card	64GB
Housing material	ABS	Operation system	Multitasking operating system with touch/menu operation
LCD monitor	5 inches	Image control	Live image 5 levels of 5 magnification, stored image 5 levels of 3x magnification
Touch screen	Capacitive touch screen	Image format	JPG 1200*720
Resolution	1280*720	Video format	AVI 1280*720
Contrast	1000:1	Software update	Site upgrade via USB flash drive
Brightness	1000 CD/m	Language	14 languages
Frame rate	30fps	Image mode	Noise reduction
Joystick control	Compatible with electric/manual control articulation	Screen rotation	Available
Probe interchangeability	Available	Image sensor	Available
Output port	HDMI/AV	Brightness level display	Available
USB port	Mini-USB B type	Picture rename	Available
System memory	Not available	Text Notes	Multi-character input
Light source	LED/Fiber	Negative	Available
Light hour	100,000 hours	Ruler measurement	Available
Brightness control	Manual 5 level	WIFI	Optional
White balance	Auto/Manual		
Power supply		Battery	
Power input	AC 100~240V 50/60Hz 0.35A	Battery	3.7V/9000MAH
Power output	5V/3A	Charging hour	5 hours
Charging method	Cable or cradle wireless charging	Battery operation hour	More than 4 hours

