

## RB SERIES

### Infrared Thermal Borescope

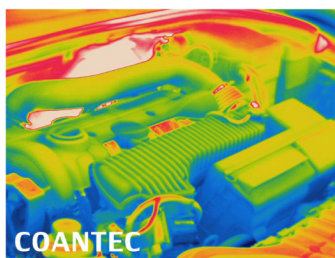


- The camera is located on the tip of tube .
- Infrared probe can be bent, turned, vision-extended and replaced.
- Infrared image temperature measurement .
- A perfect combination of borescope and infrared thermal imaging technology.
- Exclusive technology and innovative design.
- The material of tube is made of 4 layers' braiding with double tungsten alloy.

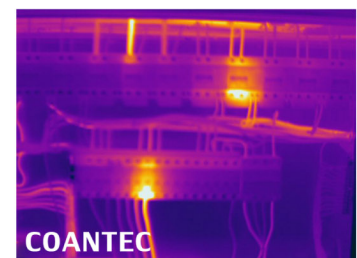
Anti-terrorist inspection



Automobile inspection



Electric cabinet inspection



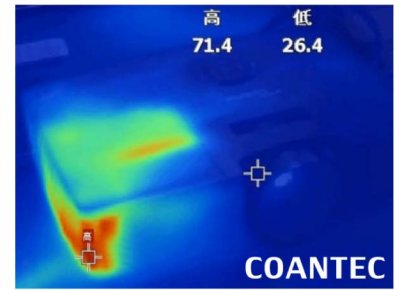
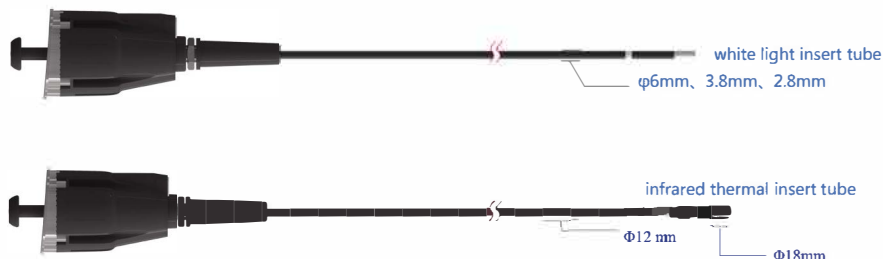
Infrared Thermal Borescopes are mainly applied in the field of NDT, automobile maintenance and police security detect.

## Parameters

Spec	Type	Standard Probe	Professional Probe
Temperature Measurement		2*2 temperature measurement at the central point	
Measuring Accuracy		±2°C	
Measuring Range		-20-150°C	-20-380°C
Radiance		0.95 fixed	
Thermal Sensitivity		0.1°C	
Relevant Time		150ms	100ms
Special Function		NA	automatic tracking of hot spot and cold spot( customized)
Probe Resolution		80*60	160*120
Viewing Angle		50°	57°
Palette		rainbow	iron color, rainbow, grey(customized)
Tube length		1 meter	
Working Temperature		0°C~45°C	
Temperature Display		relative temperature	
Power Consumption		1.1W	
Display		HD 3.5inch, 640*480	
Photo/Video		Yes	

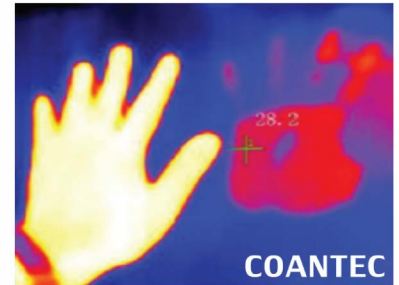
## Replaceable insert tube

A great innovation in industrial endoscope industry: we use consumable material design of insert tube. According to different inspection requirements, users can easily replace the insert tube between white light tube and infrared thermal tube, which can greatly reduce the cost.



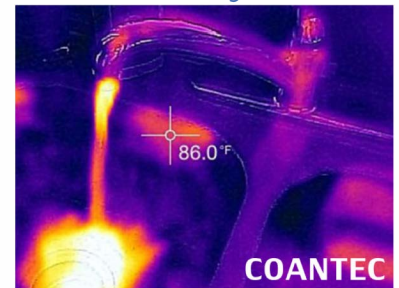
## Temperature measurement

Indicate and auto track the maximum and minimum temperature in the image.



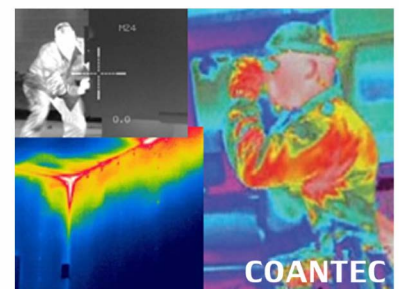
## DDE Image enhancing technology

We use this technology in order to get clearer images



## Central Point

2\*2 temperature measurement



## Palette

iron color, rainbow, grey