

P-series

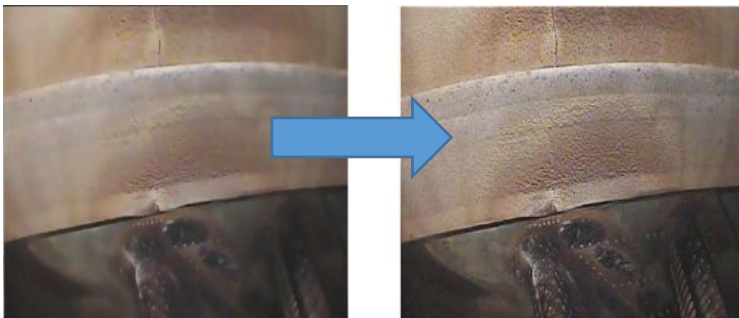
High-definition Industrial Endoscope



Introduction:

Industrial videoscope is a creative one composed of a flexible tube and a small - size body. Its CMOS image process system with 1,000,000 pixels provides ultra clarity and a perfect original display. A component design with 8 - inch ultra clear touch screen, 10,000 LUX brightness, an electronic magnetic rocker which can adjust omnidirectionally for 360°, and its lower price, 30% - 50% cheaper than any imported one help YTE - P Series enjoy its superiority.

Technical Advantages



- ◆ International leading CMOS image process system, 8-inch touch screen, ultra - clear image showing original condition, even for micro defects.(contrast between 400,000 pixels and 750,000 pixels.)



- ◆ LED packing technology, five degree to adjust brightness, probe illuminance can reach 10000Lux - 150 times brighter than indoor fluorescent.
- ◆ Insertion tube is woven with 4 - layer of tungsten alloy, so it is of high anti - friction and anti - erosion.



- ◆ Electromagnetic rocker control structure, probe bends arbitrarily for 360°---so flexible that a controller can easily control probe with one thumb.
- ◆ Locking automatically and fixed position memory---holding on for 3 seconds to lock when probe bent; Open fixed position memory function after locking. Probe will bend around locking point when the rocker is operated again.



- ◆ 8 - inch super clear touch screen. Windows interface, easy to operate. Small bulk with hand and shoulder straps. Portable.
- ◆ Monitor body connects controller with a rapid insertion tube. The separate longest distance between the body and controller is two meters so it is more applicable on - site.



- ◆ A supporting structure fixed on the back of the monitor body can help user without holding it all the time.
- ◆ Video output and high - capacity SD card to provide convenience for sharing database.
- ◆ 32G mass TF card storage.

Application field:

1. Aviation & Space Industry

It can be used to inspect regularly turbine, blades, engine, surface of welding and conductor pipes, combustion chamber in plane, and in development and manufacture of rocket.

2. Electrical Production and Construction Unit

It can be used to detect and monitor defects of important apparatus such as turbine, pipes.

3. Petro - Chemical and Pressure Container Industries

It can be used to inspect reserve tanks, heat exchangers and tank trucks in oil refinery, pipes in chemical plant and containers, steel cylinders and pipes in special inspection unit and pressure container plant.

4. Railway, Ship, Construction Engineering and Research Unit

Railway/Ship: It can be used to inspect electrical locomotive, air - conditioner, turbine, heater, gas - engine and flames of boiler.

Construction Engineering: It can be used to inspect erosion and fouling of pipes, rust of concrete iron, break of support shaft and bridge connection part; to observe caves inside tunnel and construction model; to diagnose erosion and blockage of running water pipe.

Research Unit: It can be used in observation, research, trial, archaeological work and etc.



Models for P-series

Model	Model no	Description							
		Probe bends	Diameter(mm)	Insertion tube length (m)	Camera location	Near Focal Camera			
						Depth of Field	Luminance	Angle of view	
P	P615FN	150±10°	6	1.5	Front	5 - 25mm	24000 lux	90°	
	P620FN	150±10°	6	2	Front	5 - 25mm	24000 lux	90°	
	P630FN	120±10°	6	3	Front	5 - 25mm	24000 lux	90°	
	P410FN	170±10°	3.9	1	Front	7 - 80mm	6000 lux	100°	
	P420FN	150±10°	3.9	2	Front	7 - 80mm	6000 lux	100°	
	P430FN	120±10°	3.9	3	Front	7 - 80mm	6000 lux	100°	
	P450FN	120±10°	3.9	5	Front	7 - 80mm	6000 lux	100°	
P	Model no	Description							
		Probe bends	Diameter(mm)	Insertion tube length (m)	Camera location	Middle Focal Camera			
	Depth of Field					Luminance	Angle of view		
	P	P615FM	150±10°	6	1.5	Front	7 - 80mm	24000 lux	60°
		P620FM	120±10°	6	2	Front	7 - 80mm	24000 lux	60°
		P630FM	120±10°	6	3	Front	7 - 80mm	24000 lux	60°
P650FM		120±10°	6	5	Front	7 - 80mm	24000 lux	60°	
P680FM		120±10°	6	8	Front	7 - 80mm	24000 lux	60°	
P	Model no	Description							
		Probe bends	Diameter(mm)	Insertion tube length (m)	Camera location	Far Focal Camera			
	Depth of Field					Luminance	Angle of view		
P	P615FF	150±10°	6	1.5	Front	50mm-∞	24000 lux	60°	
	P630FF	120±10°	6	3	Front	50mm-∞	24000 lux	60°	

Specifications

Module	Submodule	YTE-4P series	YTE-6P series
System	Dimension	230*240*6mm(mian body only) 450*610*260mm(transport case)	
	Weight	1.5Kg(mian body only) 11.8Kg(with transport case)	
	Display screen	8" IPS industrial HD touch LCD screen	
	Control lever	Electric rocker with lens able to rotate in 360-degree	
	Probe reset	Automatic set	
	Direction fine tuning	Direction fine tuning adjustable	
	Functions	Photography, video, brightness control, locking and fine tuning	
	Internal storage	32G high speed SD card	
	Data I/O port	SD card interface, VGA video signal interface, charge interface and USB interface	
	Battery	Four 18650 Lithium batteries(replaceable)	
	Standby time	3 Hours	
	Brightness Control	5-degree brightness adjustment	
Front video probe	Probe dimension	4.0mm±0.1mm	6.0mm±0.1mm
	Total length	1-5m	1-8m
	luminance	6,000 lux	24,000 lux
	Angle of view	100°	
	Angle of bending	170±10°(max)~120±10°(min)	
	Effective pixels	Direct view of 750,000 pixels	
	Depth of field (mm)	7-80mm	
	Direction of rotation of lens	Electric rotation of any direction at 360°	
	Material of insert tube	Tungsten wire wear-resistant tube	
	Waterproof of Probe	IP67	
Software	Operation system	Real time multitasking operation system	
	User interface	Touch screen operation menu	
	File management	Support image and video play, delete, format and naming	
	Image control	Zoom in/out, playback	
	Image format	JPEG/JPG/PNG (record the date and time)	
	Video format	AVI (record the date and time)	
	Language	English/Chinese/Korean/German	
	Software upgrading	Upgrading available by SD card	

