

M-ADV **Type A** **series**

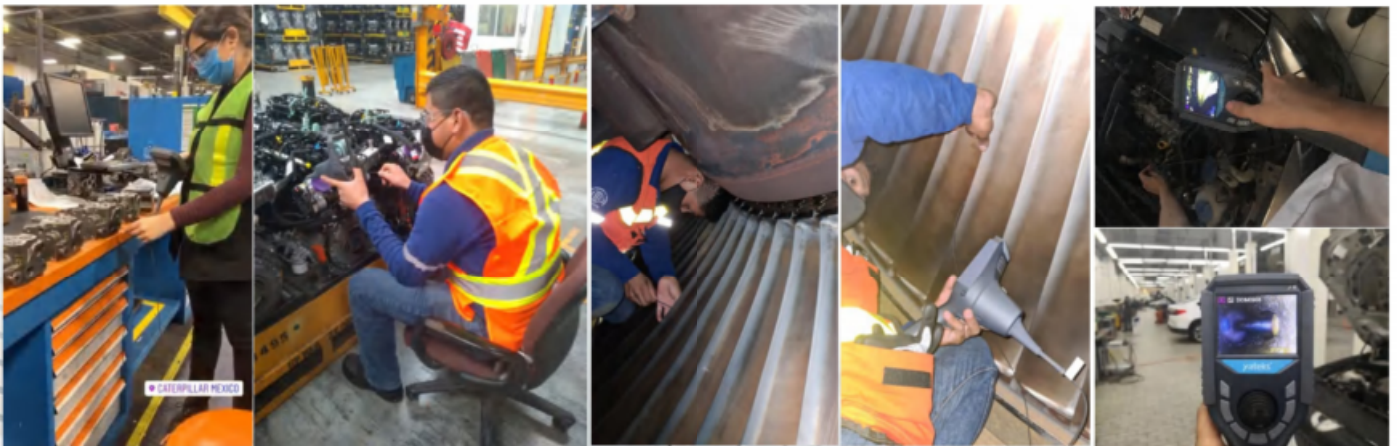
Industrial Videoscope



High definition, portable, flexible, versatile --- M-ADV Series, all-round upgrade!

It adopts the latest image processing technology and high resolution 640*480 IPS screen to ensure high definition image, even minor defects can be inspected. In the meantime, it has the new function of adjusting exposure value, which can be used cooperatively with LED adjustment to offer the most suitable light for the best inspection effect. This new feature is especially excellent while checking "light-reflecting objects" such as metal pieces.

M-ADV Series(Type A) has options of 2.2mm, 2.8mm, short distal tip 3.9mm forward view, UV 3.9mm/6mm. Smallest diameter and shortest distal tip can flexibly satisfy your inspection demands of extreme narrow areas.



Technical Advantages:

Industrial Videoscope

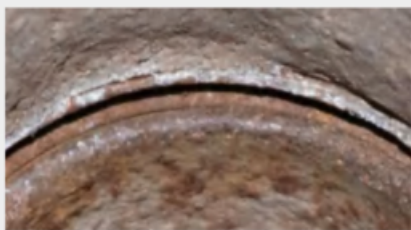


Image of advanced M-ADV 2.8mm now



Image of 2.8mm in early time

(Image is very excellent if you have a physical comparison with any other 2.8mm products.)

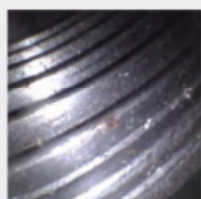
Adopting brand-new advanced image processing technology, ultra clear image, minor defects are all under your view.image.



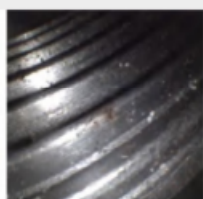
LED illumination way, brightness is up to 10000lux;



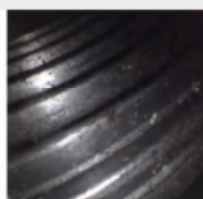
Upgraded to 640*480 high definition IPS screen, wider viewing angle, clearer display, more outstanding color rendition, showing still image and dynamic videos of the inspected objects in real time.



LED level 6
Exposure level 0



LED level 5
Exposure level -1

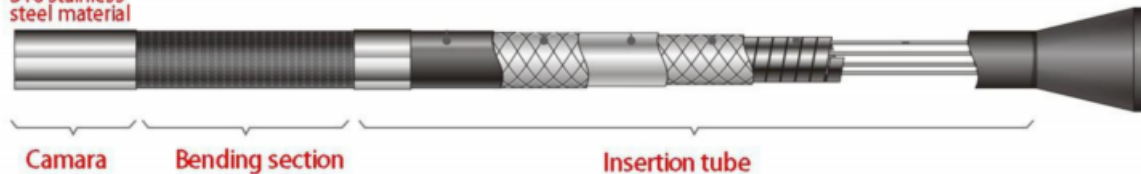


LED level 2
Exposure level -2

Cooperatively adjust LED level and LV level to reach the best checking result.

Unique feature of exposure value adjustment to offer the most suitable light for inspection. While checking "light-reflecting pieces"(metal objects), it's very important to restrain the light to a suitable level if the LED light is bright: balance of "enough light" and "not too much light".

316 stainless steel material



Adopting four tungsten-braided layers: wear-resistant, corrosion-resistant and IP67 rate

The camera module head adopts 316 stainless material, which has better corrosion-resistant feature than 304 stainless on the market. In the meantime, four tungsten-braided layers can help it to be more wear-resistant and IP67 rate.

6.HDMI interface, more widely used for real time video output.



Other functions:

- ☆ Camera options include 2.2mm, 2.8mm, 3.9mm short distal tip, UV 4mm/6mm satisfying different application demands;
- ☆ 360° mechanical arbitrary articulation, 180° bending angle —— convenient, accurate and automatic locking of direction. (2.2mm: two-way articulation)
- ☆ Image can flip, freeze, zoom for 4 times, for the convenience of analysis to minor defects.
- ☆ Base unit can accept all digital lossless video data, which can gather and save complete camera data.
- ☆ Brand new software with intuitive UI; software can be easily upgraded by SD card.



system	Dimension		315*103*173mm	
	Weight		0.6KG	
	Display screen		High brightness IPS, 3.5 inch LCD	
	Display resolution		640*480	
	Exposure value adjustment		-2, -1, 0, +1, +2	
	Image mirror/Flip adjustment		180° mirror and flip	
	Zoom		4x digital zooming	
	Image effects		color, negative	
	White balance		Automatic white balance, manual white balance	
	Joystick control		Mechanical rocker 360° articulation	
	Automatic lock		Automatic locking	
	Functions		Photo, video, brightness adjustment, menu, picture zoom in/out, picture freeze, picture flip	
	Audio		Integrated 3.5mm headset	
	RAM		32G	
	I/O Port		SD card interface, headset interface, HDMI interface, charging, Micro USB interface	
	Battery		18650 battery*1(replaceable)	
	Standby time		≥4h	
	Operation method		Hand-held portable	
	Brightness control		4-level brightness adjustment	
Front video probe	Probe size	2.2/2.8mm	3.9mm (short distal tip)	UV 4mm&6mm
	Length	0~2 (m)		0~3 (m)
	Illuminance	≥3500lux	≥8000lux	≥10000lux
	Insert tube material	Tungsten wire wear tube		
	Lens steering	360° mechanical arbitrary direction		
	Bending angle	≤1 (m), 150±10°;		
		2 (m)≥length>1 (m),140±10°		
	Effective Pixels	450,000		
	DOF(mm)	3~50mm		
	AOV	120°		
	Pipe type	Tungsten-braided insertion tube		
Software	Operation system	Real time multitasking operation system		
	User interface	Drop-down operation menu		
	File management	Photo/video playback, deletion, formatting		
	Image control	Flip, zoom in/out, screen frame		
	Image format	JPEG/JPG (record date and time)		
	Video format	AVI (record date and time)		
	Language	English/Chinese/Japanese/German/Spanish/French/Korean		
Operating environment	Base unit working temperature	-10~50°		
	Probe working temperature	-20~50°		
	Relative humidity	Highest 90%, no condensation		
	Waterproof	Base unit IP54/video probe IP67		

Model No	Part No	Description										
		Diameter [mm]	Insertion Tube Length [m]	Camera				Optic		Light		Probe Bending
				Location	Head Type	CMOS Sensor	Resolution	Depth of Field	Angle of View	Type	[Lux]	
M210FN-WLS	11220010	2.2	1	Front	PM	D	640X480	3-50mm	120°	LED	3,500	150±10°
M215FN-WLS	11220015		1.5									140±10°
M220FN-WLS	11220020		2									140±10°
M310FN-WLS	11230010	2.8	1	Front	PA	D	640X480	3-50mm	120°	LED	8,000	150±10°
M315FN-WLS	11230015		1.5									140±10°
M320FN-WLS	11230020		2									140±10°
M410FN-WLS	11240015	4	1.5	Front	OG	D	400*400	3-50mm	120°	LED	15,000	170±10°
M420FN-WLS	11240030		3									130±10°

