

Dellon PTZ41

Pipe Inspection Camera

- ✓ Good portability
- ✓ Wide application
- ✓ Long detection distance

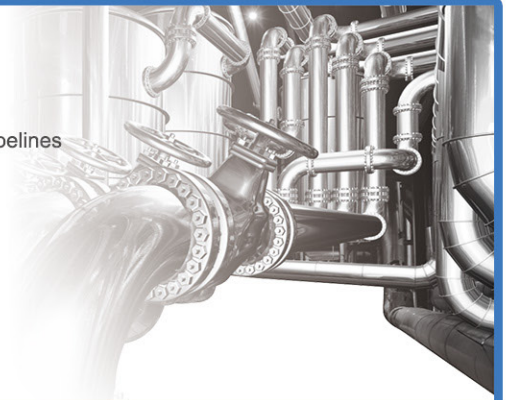


HD · Intelligence

Long length pipe inspection camera



- Dual lens quick replacement
- Hard long distance push rod cable
- Outstanding pipeline detection capabilities
- Suitable for visual inspection of various industrial pipelines with a diameter range of 26m-300m
- 30m long detection distance, and 60m customized



Joystick videoscope

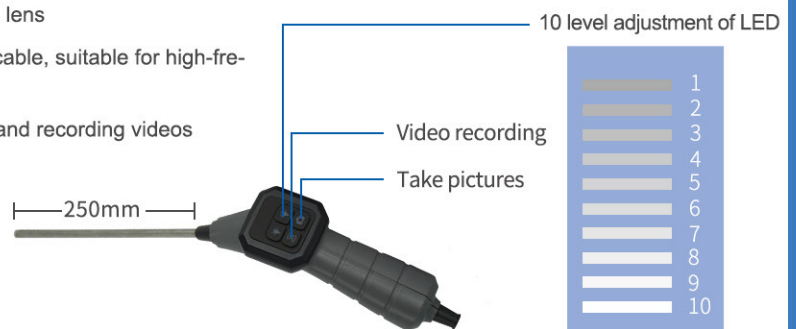


- 8mm million HD lens
- The joystick controls the 4-way 360 °rotation of the articulation, each way bending no less than 120 °
- One click operation for taking photos and recording videos
- Button control LED adjustment
- 3m wear-resistant tungsten braided insertion cable

Stainless steel rigid borescope

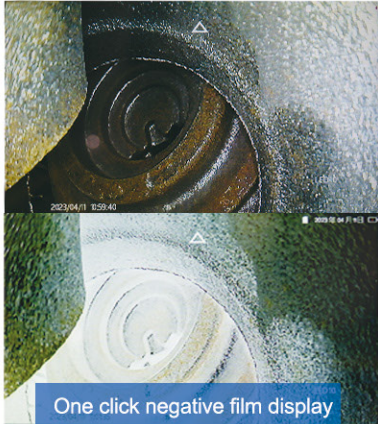


- 6mm million HD front + side view dual lens
- 250mm rigid stainless steel insertion cable, suitable for high-frequency direct hole detection
- One click operation for taking photos and recording videos
- Button control LED adjustment

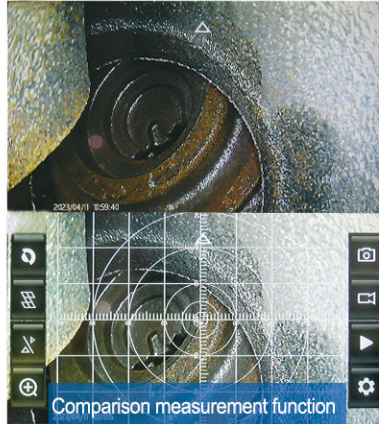


Focus on the new non-destructive technology of visual acoustics,
build the world's first-class brand of non-destructive testing.

Powerful operating system

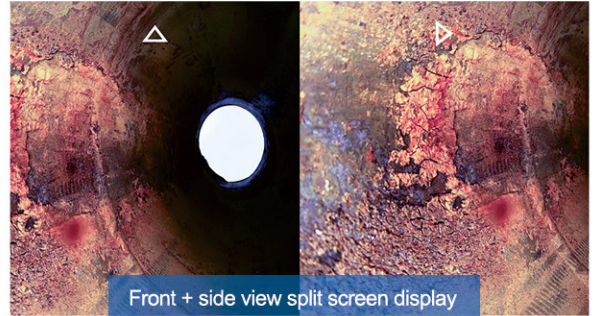


One click negative film display



Comparison measurement function

- When it is front+side view lens images can be displayed in real-time on the one same screen
- Switch between front/side view single lens images at any time



Front + side view split screen display

Portable controller



- New 7-inch HD display with touch screen, resolution 1280*720
- One-button design for taking photos and videos
- Compatible with pipe inspection camera, scope unit and rigid borescope
- 64GB SD memory card, which can record inspection images

Scope unit



- One-button operation for taking pictures and videos
- 8mm scope unit is controlled by joystick, each way bending not less than 180°, 3m insertion cable, suitable for complex space inspection

Rigid borescope



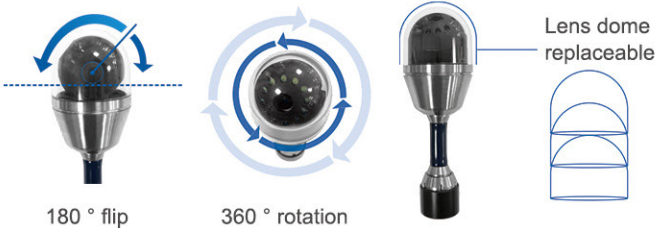
- One-button operation for taking photos and videos on the rigid borescope probe, led light is adjustable
- 6mm diameter by 25cm length rigid borescope, suitable for high frequency straight hole inspection

24mm wide-angle front view camera



- Megapixel Wide Angle Front View
- Greater than 100° field of view angle
- IP67 waterproof standard, all alloy material, robust and durable

40mm diameter pan and tilt camera



180° flip

360° rotation

Lens dome replaceable

Package



4-in-1 Transportation Case (optional)

Applications



Industrial pipelines



Offshore Oil Platform



Pipeline installation

Technical parameters

Probe diameter	41mm	Probe diameter	24mm	Probe diameter	8.4mm	
Probe length	60mm	Probe length	42mm	Image sensor	CMOS 1/4	
Pixel	1,000,000	Pixel	1,000,000	Pixel	720p	
Lighting	12 high brightness LED lights	Lighting	12 high brightness LED lights	FOV	>120°	
Housing material	Stainless steel	Housing material	304 stainless steel	DOF	25mm - infinity	
Radial flip	180°	FOV	>120°	Housing material	Titanium alloy	
Axial rotation	360°	Image sensor	CMOS 1/4	IP rate	IP64, IP67*	
Image sensor	CMOS 1/4	DOF	25mm - infinity	Insertion cable	8mm by 3m tungsten braided insertion cable	
IP rate	IP67	IP rate	IP67	Insertion IP rate	IP64, IP67*(Articulation>90°)	
Waterproof depth	1M	Waterproof depth	1M	Bending	4-way>120°	
Hard rod diameter	6.4mm	8.4mm	Indicator	7-inch LCD display screen	Characteristic function	Split screen display (electronic mirror dual lens)
Hard rod length	25cm	25cm	Resolution ratio	1280*720	Lithium electronic batteries	11.1V 7000MAH
Hard rod material	304 stainless steel	304 stainless steel	Display frame rate	30 frames/second	Battery	Charging 8 hours, usage time > 4 hours
Lighting	High brightness LED	High brightness LED	Screen brightness	400cd/m ²	Operating temperature	-10°C~50°C
Image sensor	CMOS 1/9	CMOS 1/4	Screen contrast	800	Storage temperature	-10°C~50°C
Pixel	1,000,000	1,000,000	Touch screen	Multi-touch	Insertion cable	30M high-strength fiberglass cable
DOF	8-80mm	Front view 15mm - infinity Side view 5mm-25mm	Video output	HDMI HD	Cable diameter	5.5mm
DOV	0°	0°/90° dual camera	USB interface	Data transmission	IP rate	IP67
FOV	>90°	>90°	SD card	64G	Meter counter accuracy	3%